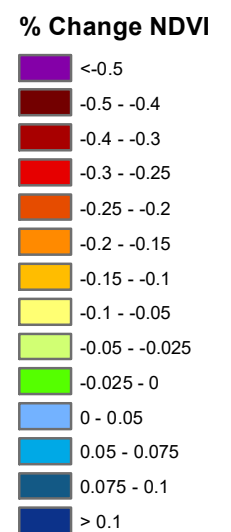
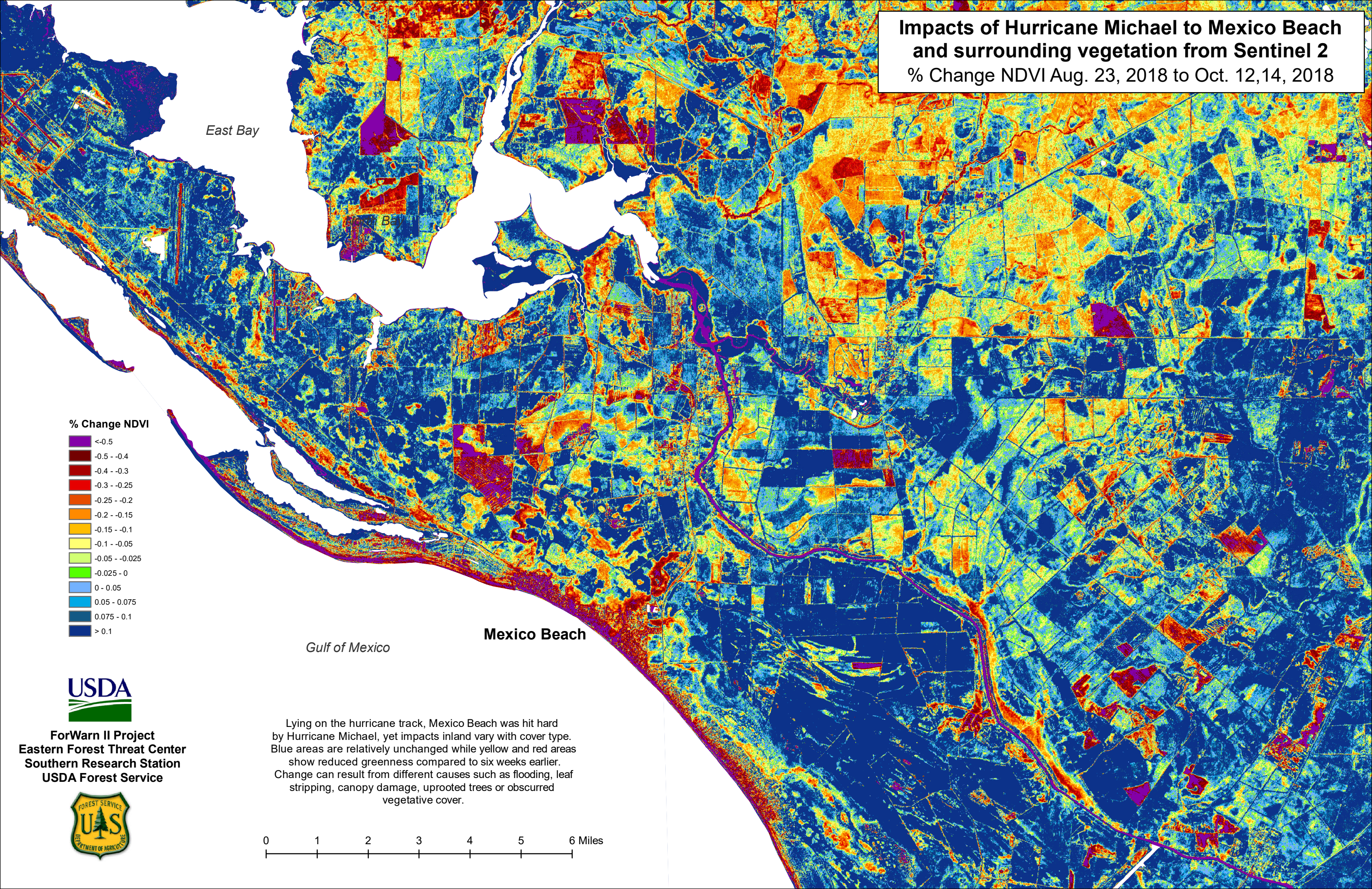


Impacts of Hurricane Michael to Mexico Beach and surrounding vegetation from Sentinel 2
% Change NDVI Aug. 23, 2018 to Oct. 12, 2018



USDA

ForWarn II Project
Eastern Forest Threat Center
Southern Research Station
USDA Forest Service



Lying on the hurricane track, Mexico Beach was hit hard by Hurricane Michael, yet impacts inland vary with cover type. Blue areas are relatively unchanged while yellow and red areas show reduced greenness compared to six weeks earlier. Change can result from different causes such as flooding, leaf stripping, canopy damage, uprooted trees or obscured vegetative cover.

0 1 2 3 4 5 6 Miles