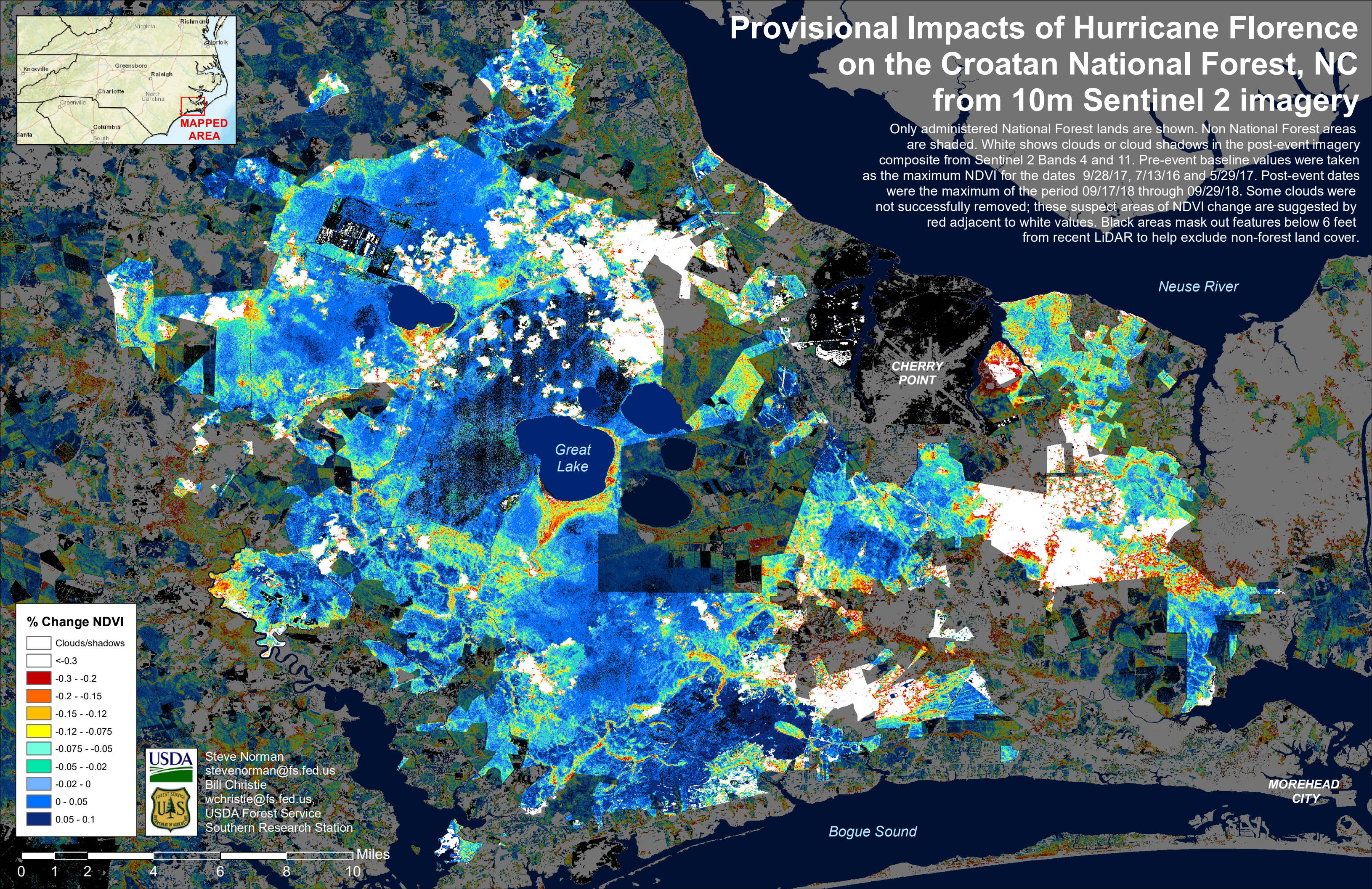
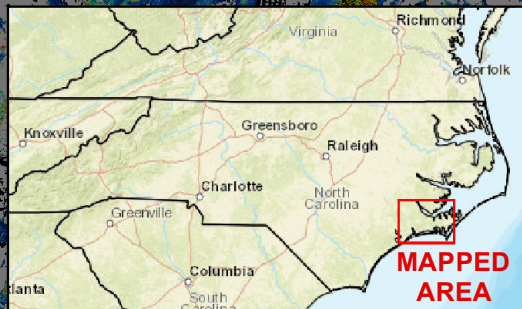


Provisional Impacts of Hurricane Florence on the Croatan National Forest, NC from 10m Sentinel 2 imagery

Only administered National Forest lands are shown. Non National Forest areas are shaded. White shows clouds or cloud shadows in the post-event imagery composite from Sentinel 2 Bands 4 and 11. Pre-event baseline values were taken as the maximum NDVI for the dates 9/28/17, 7/13/16 and 5/29/17. Post-event dates were the maximum of the period 09/17/18 through 09/29/18. Some clouds were not successfully removed; these suspect areas of NDVI change are suggested by red adjacent to white values. Black areas mask out features below 6 feet from recent LiDAR to help exclude non-forest land cover.



% Change NDVI

Clouds/shadows
<-0.3
-0.3 - -0.2
-0.2 - -0.15
-0.15 - -0.12
-0.12 - -0.075
-0.075 - -0.05
-0.05 - -0.02
-0.02 - 0
0 - 0.05
0.05 - 0.1



Steve Norman
stevenorman@fs.fed.us
Bill Christie
wchristie@fs.fed.us
USDA Forest Service
Southern Research Station

0 1 2 4 6 8 10 Miles