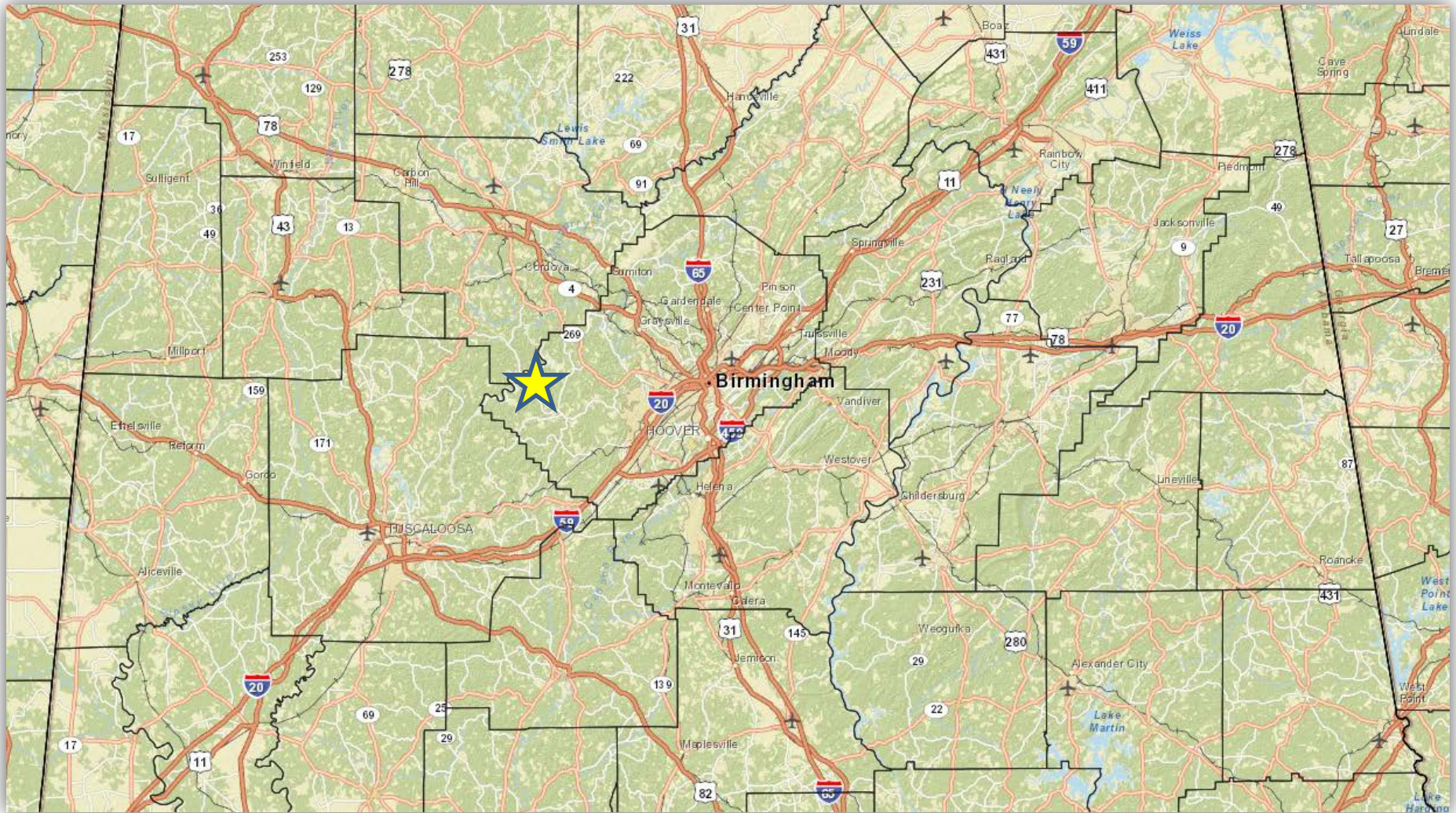
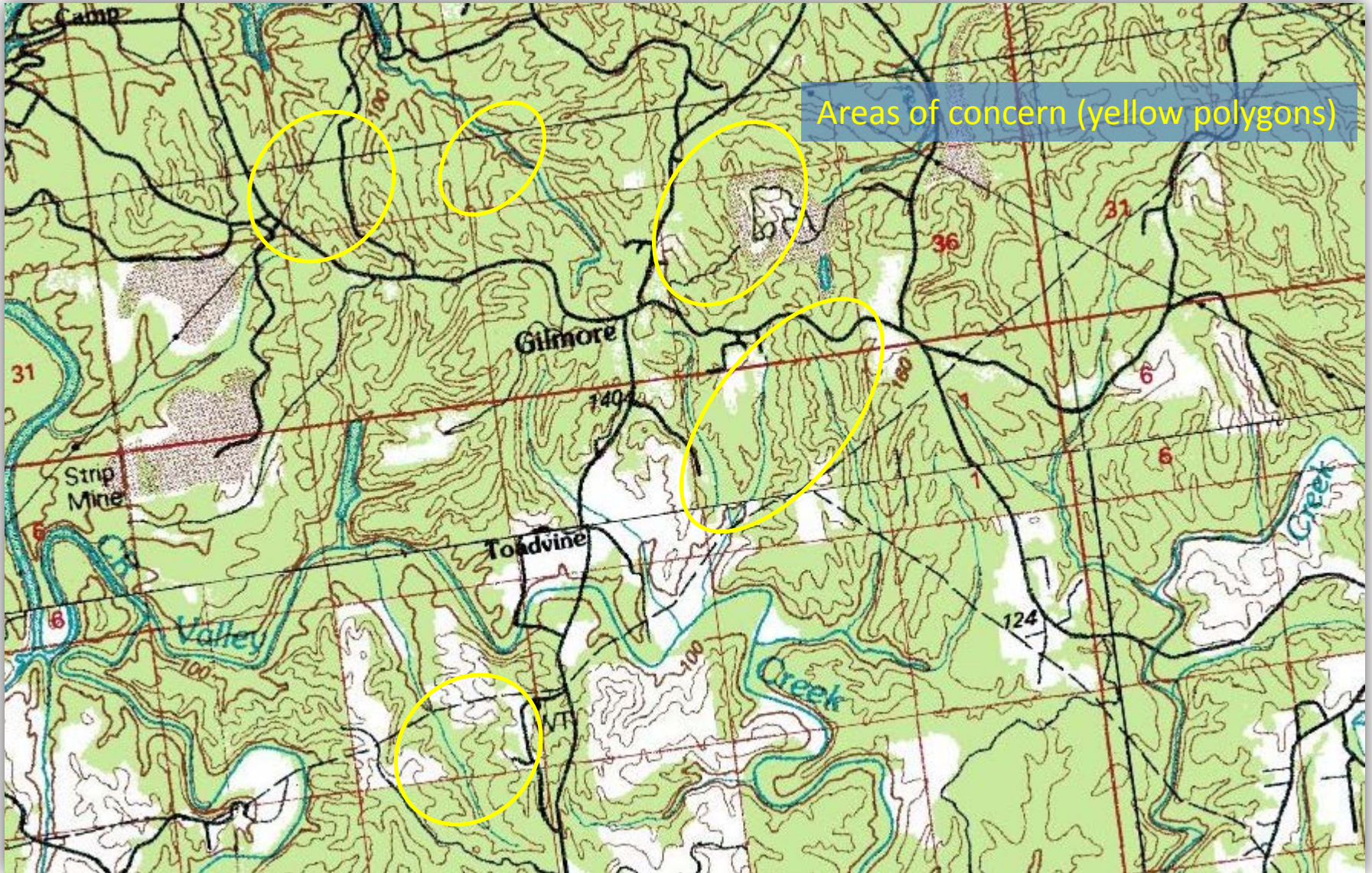


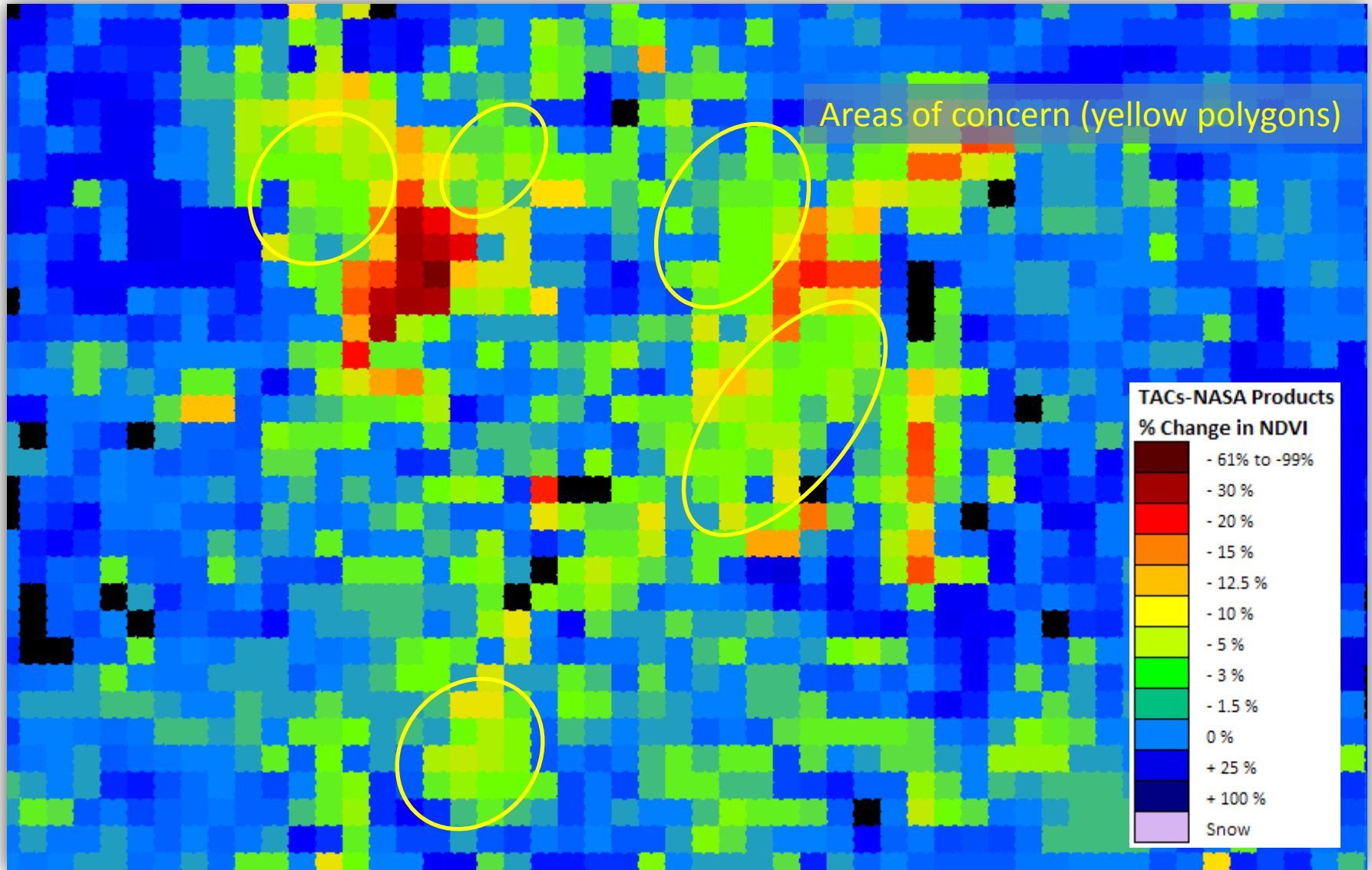
Apparent Forest Disturbance General Location, Jefferson County, AL:



Jefferson County, AL: USGS 1:100k Topographic



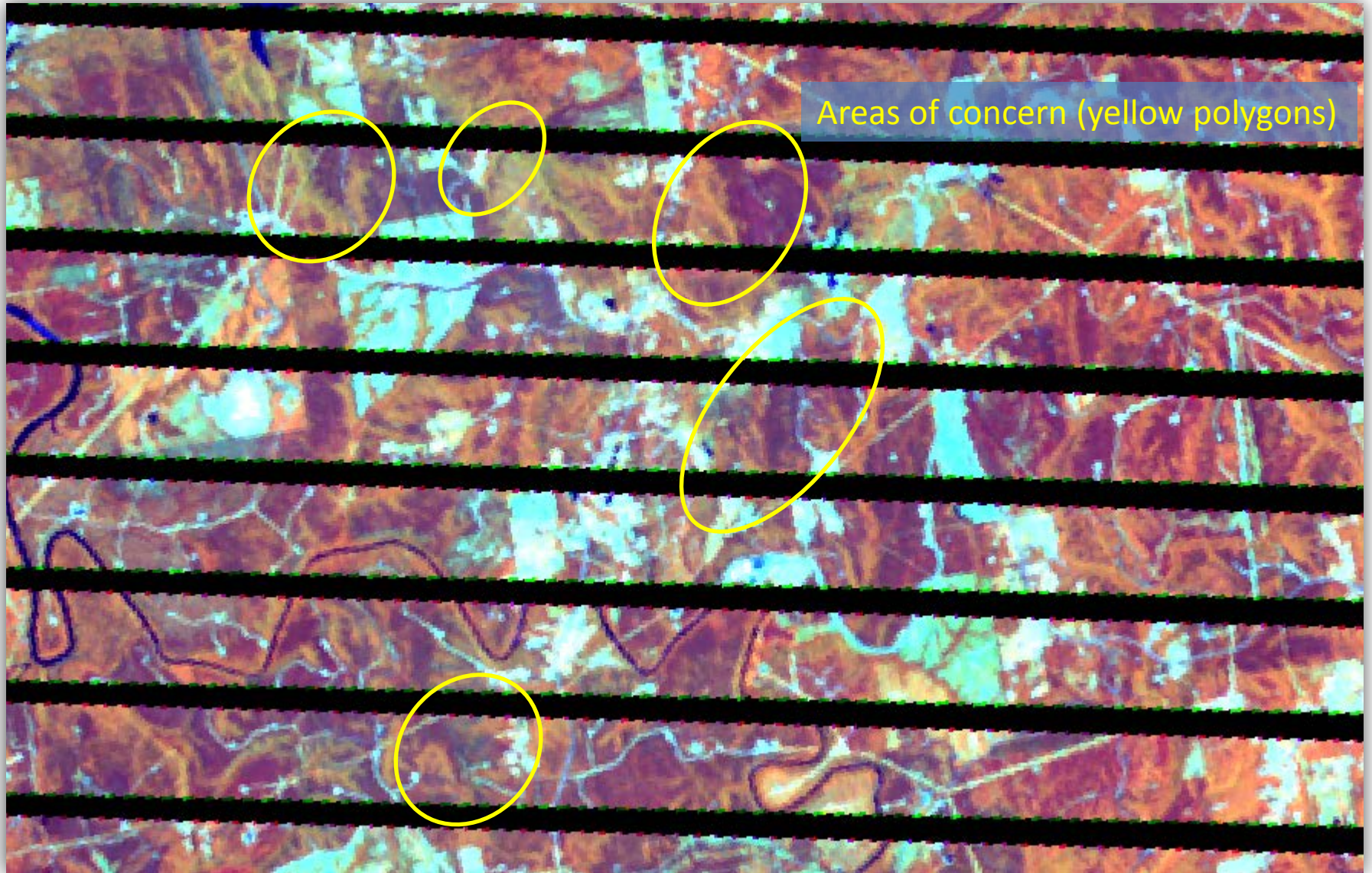
Jefferson County, AL: ForWarn 07/18/2012 1yr



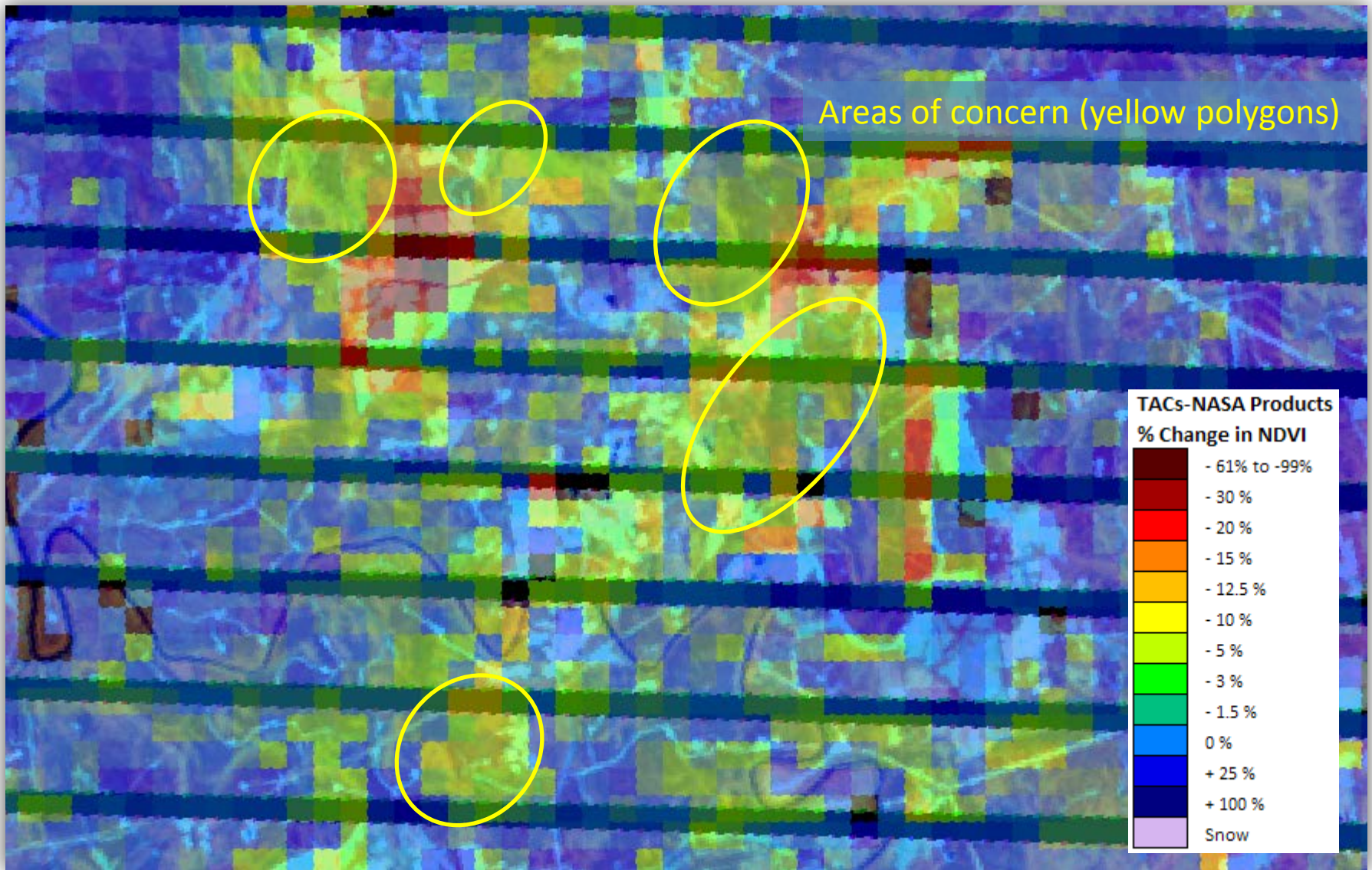
http://forwarn.forestthreats.org/fcav/?theme=CONUS_Vegetation_Monitoring_Tools&layers=AAB,AD,AE,AF,&alphas=1,1,1,1,&accgp=G04&basemap=imagery&extent=-9717777.263847157,3956302.012700034,-9685711.930481568,3970633.9555034847



Jefferson County, AL: Landsat 453, 06/23/2012 (latest cloudfree)



Jefferson County, AL: ForWarn and Landsat



Forest change image colors are lightened due to transparency

