

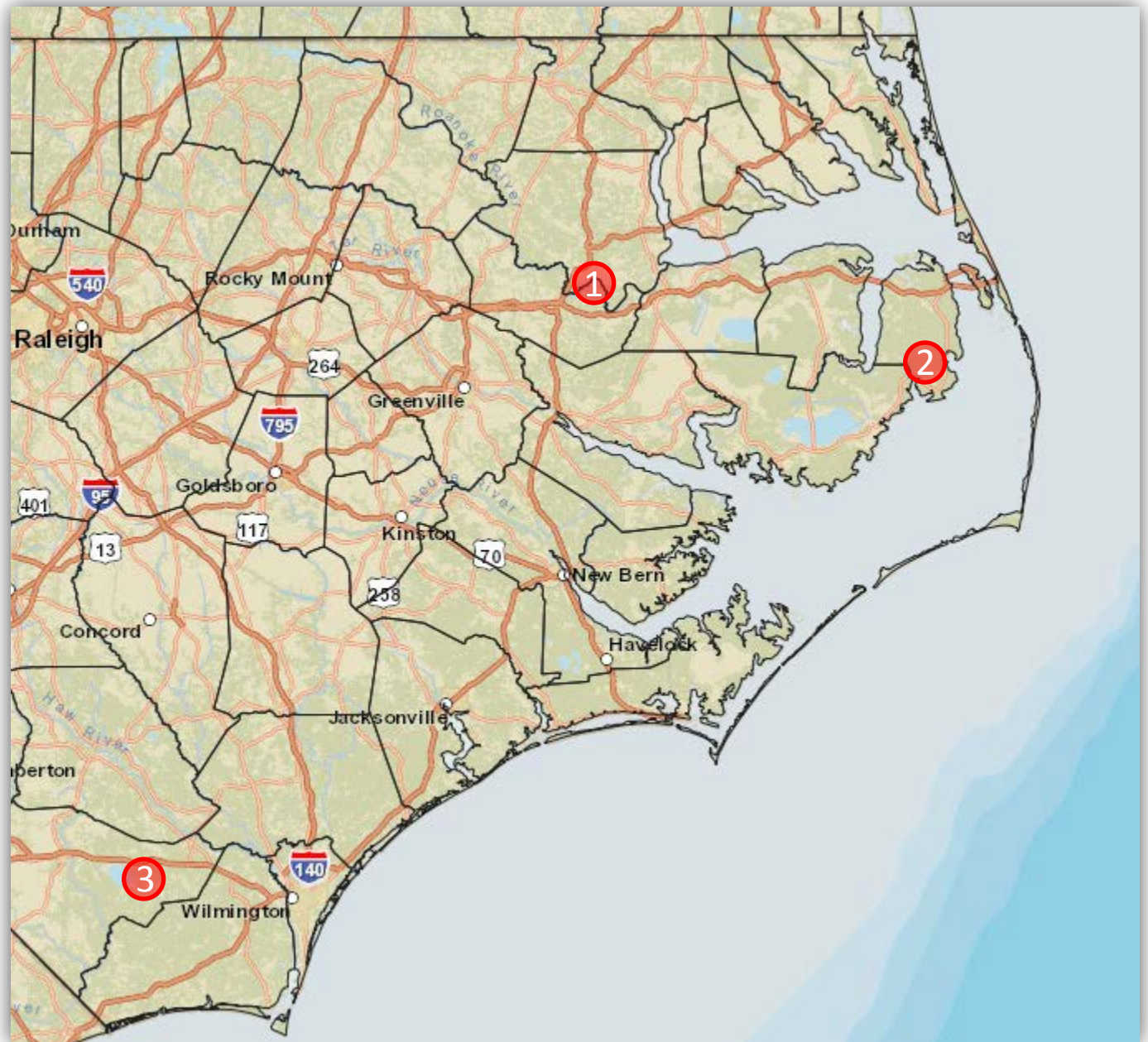
**ForWarn**

[forwarn.forestthreats.org](http://forwarn.forestthreats.org)

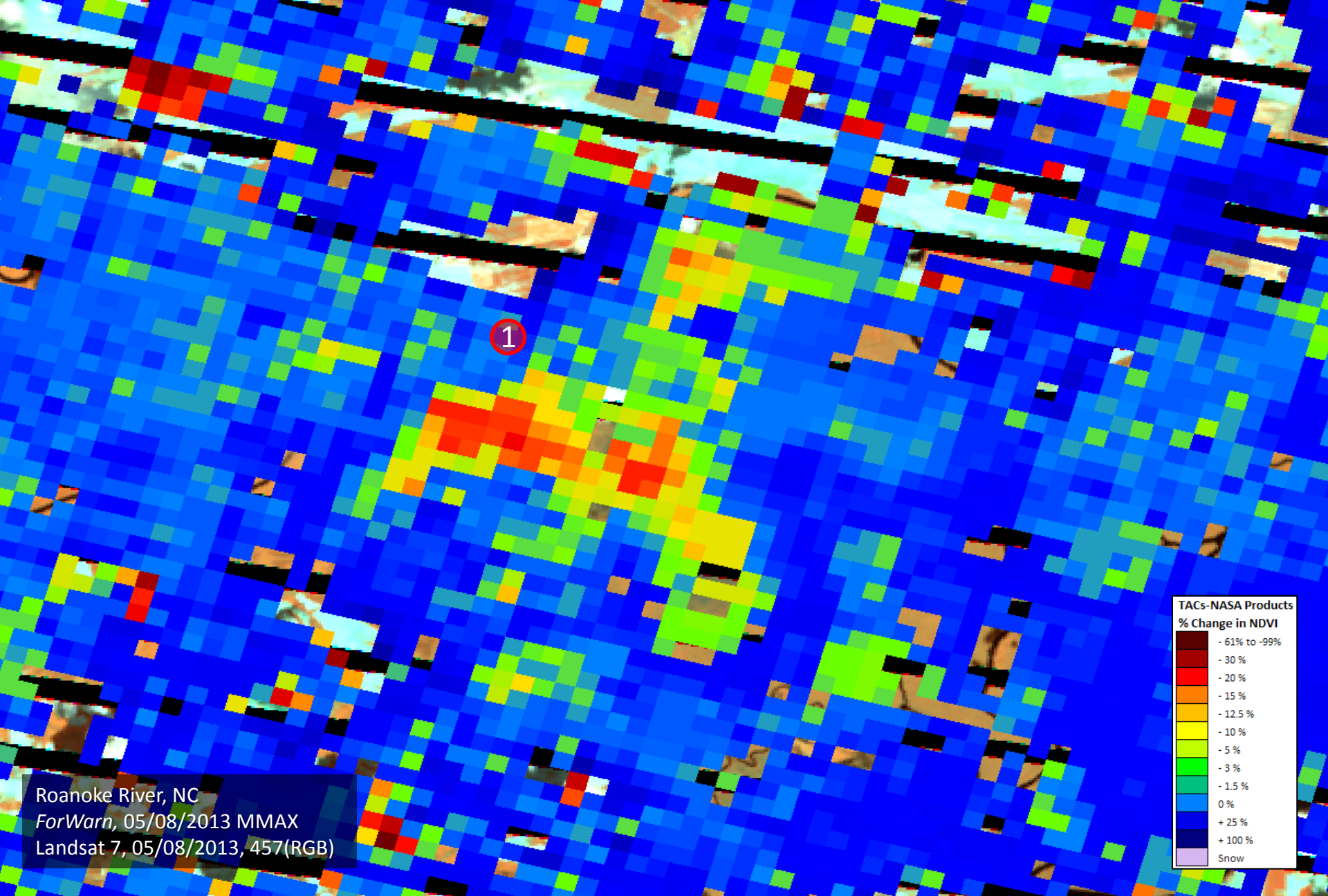
## Forest Disturbance Assessment

05/21/2013

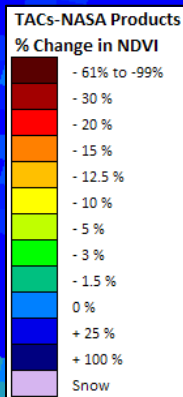
- (1) Roanoke River near Jamestown - Martin and Bertie Co., NC
- (2) West of Dare Co. Bombing Range - East of Sandy Point, Dare Co., NC
- (3) Lake Waccamaw, Columbus Co., NC



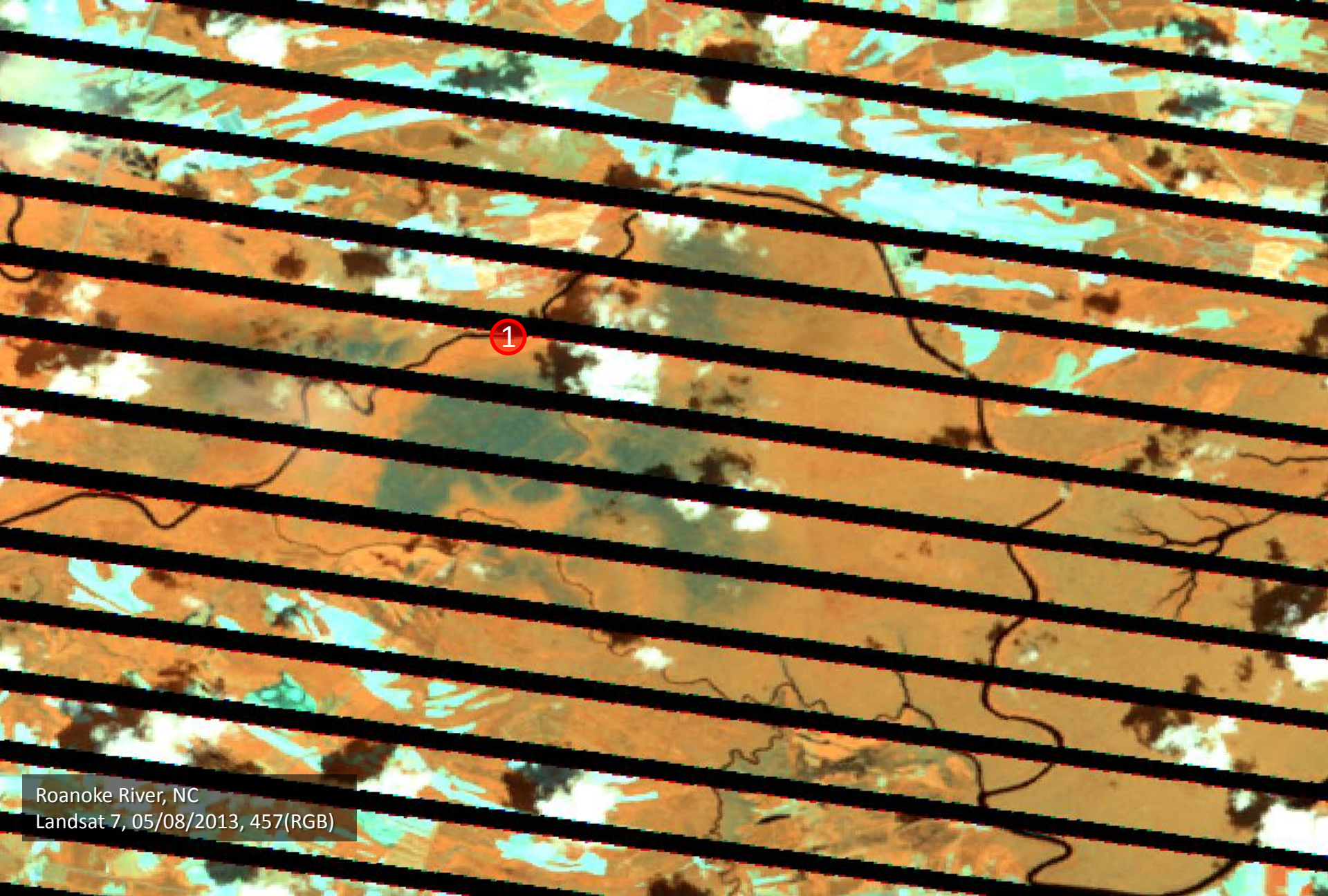
[wchristie@fs.fed.us](mailto:wchristie@fs.fed.us)



Roanoke River, NC  
ForWarn, 05/08/2013 MMAX  
Landsat 7, 05/08/2013, 457(RGB)

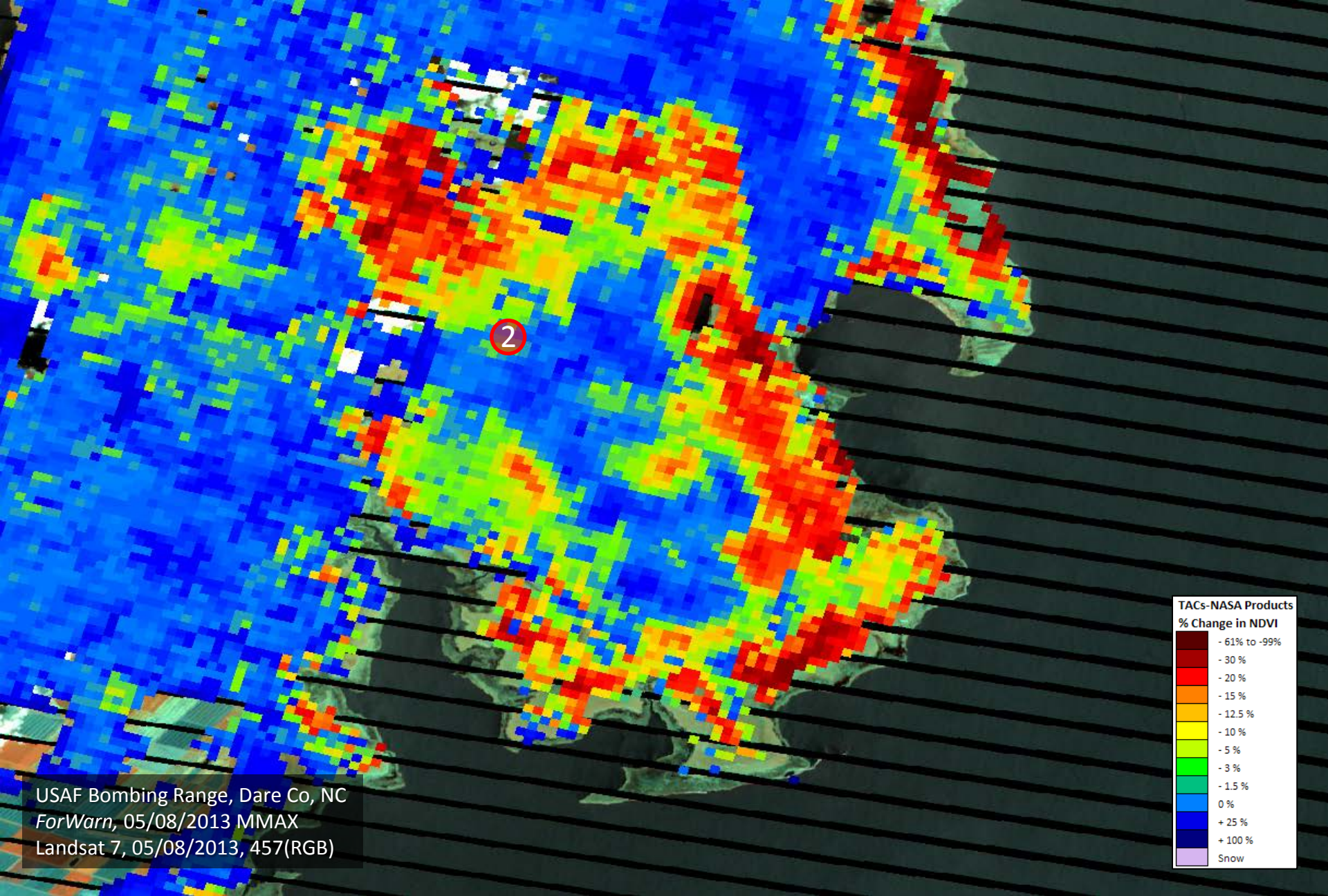




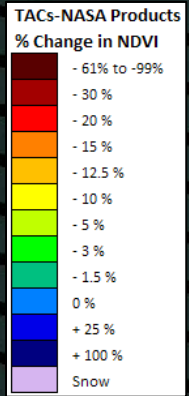


Roanoke River, NC  
Landsat 7, 05/08/2013, 457(RGB)

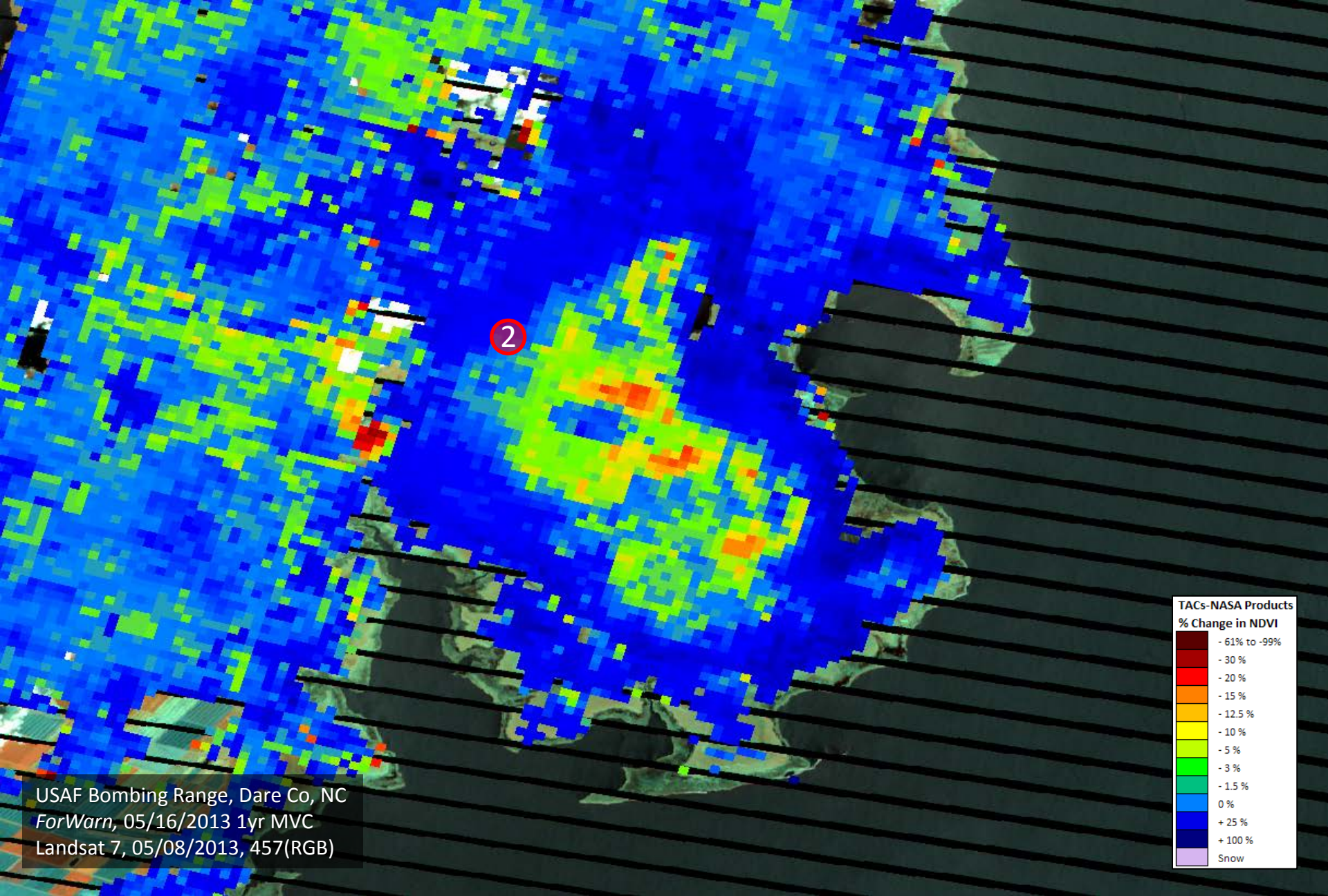




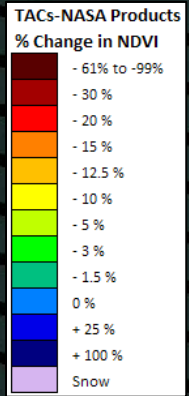
USAF Bombing Range, Dare Co, NC  
ForWarn, 05/08/2013 MMAX  
Landsat 7, 05/08/2013, 457(RGB)



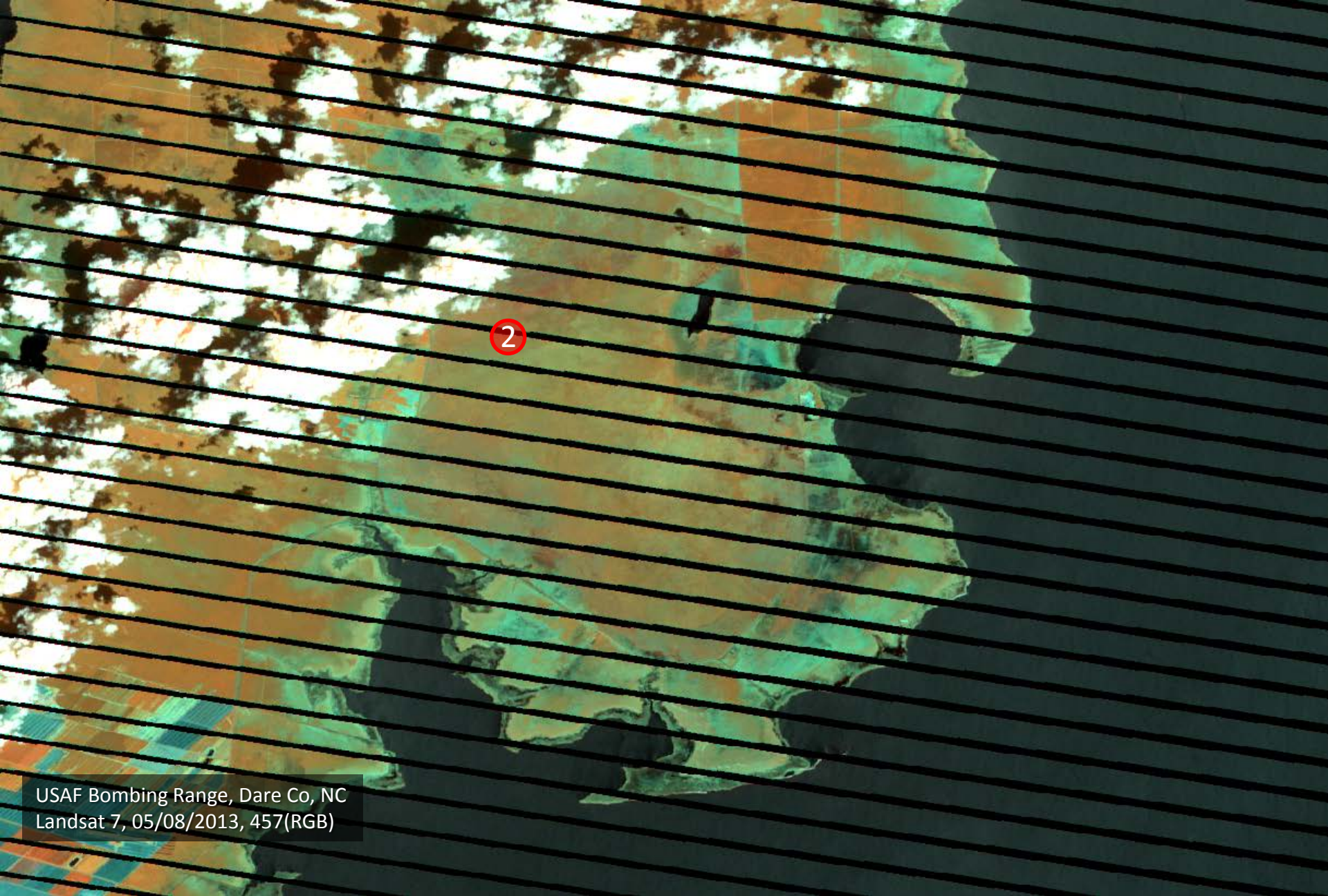




USAF Bombing Range, Dare Co, NC  
ForWarn, 05/16/2013 1yr MVC  
Landsat 7, 05/08/2013, 457(RGB)

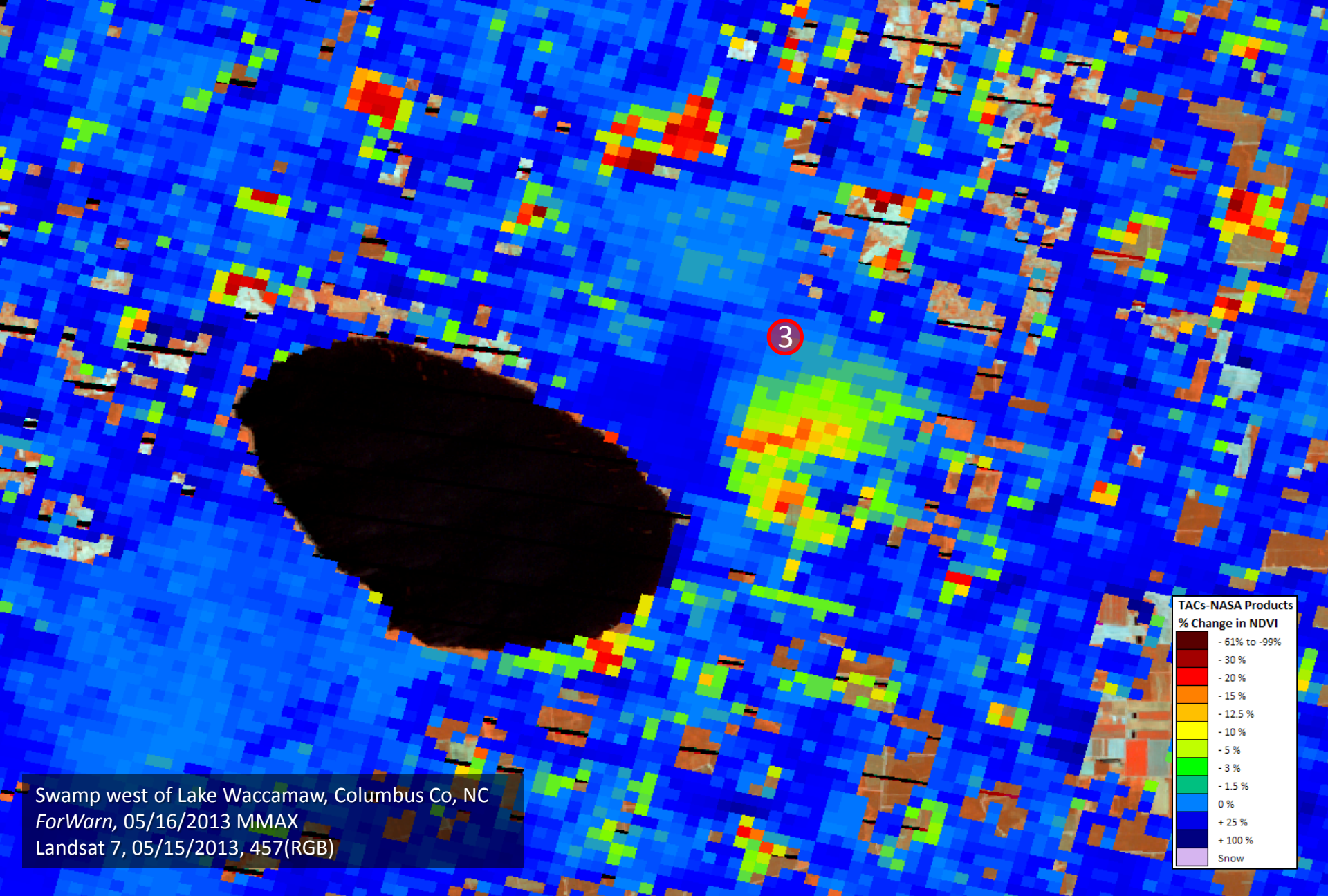






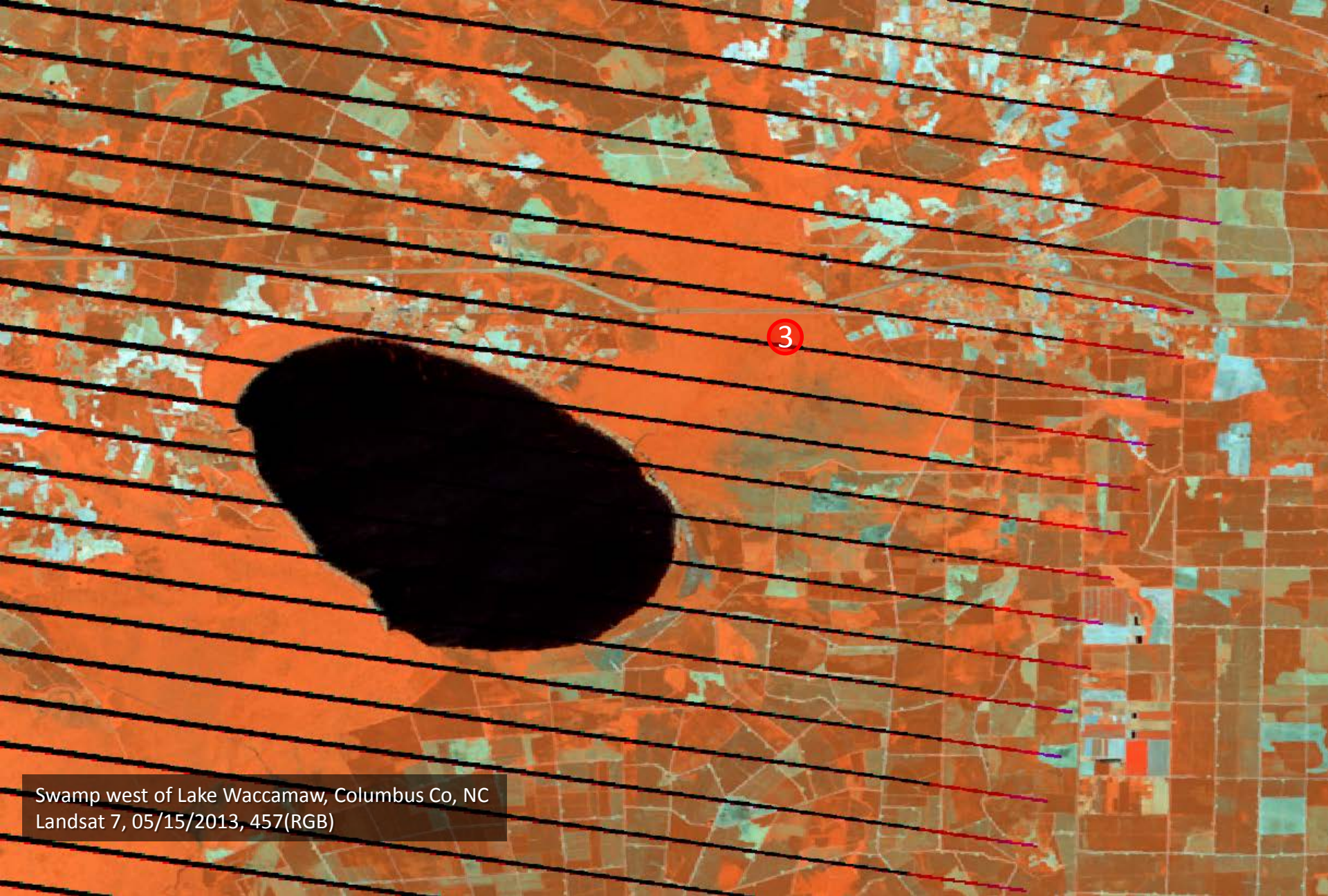
2

USAF Bombing Range, Dare Co, NC  
Landsat 7, 05/08/2013, 457(RGB)



Swamp west of Lake Waccamaw, Columbus Co, NC  
ForWarn, 05/16/2013 MMAX  
Landsat 7, 05/15/2013, 457(RGB)





Swamp west of Lake Waccamaw, Columbus Co, NC  
Landsat 7, 05/15/2013, 457(RGB)