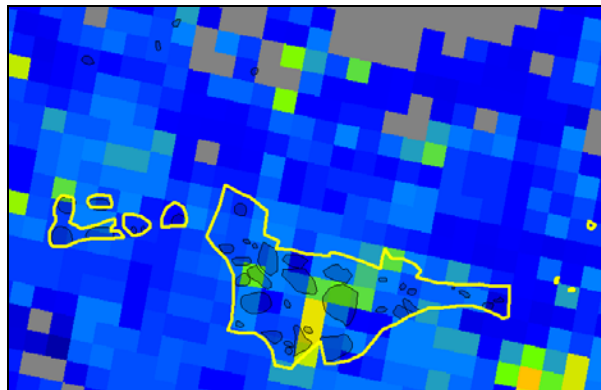
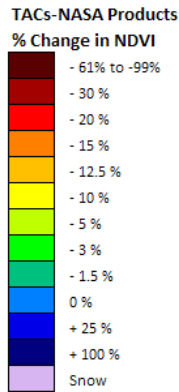
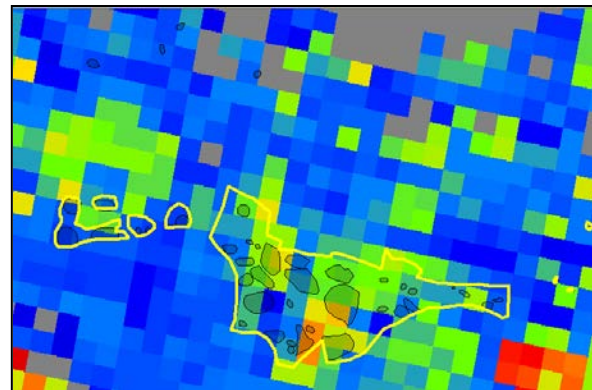


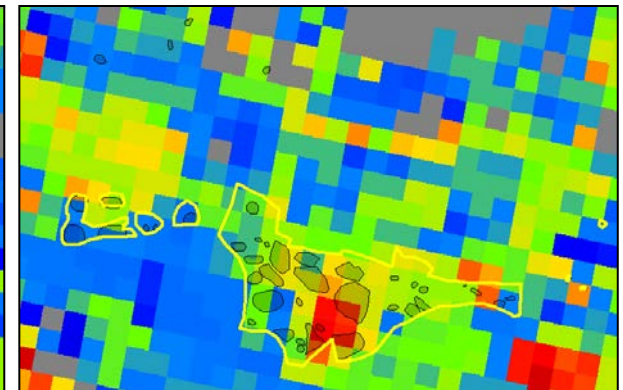
# 08/19/2012 ForWarn Forest Change Images, multi-baseline comparison with verified SPB Damage Tattnall / Toombs County, Georgia 700+ Acres



1yr baseline



3yr baseline



11yr baseline

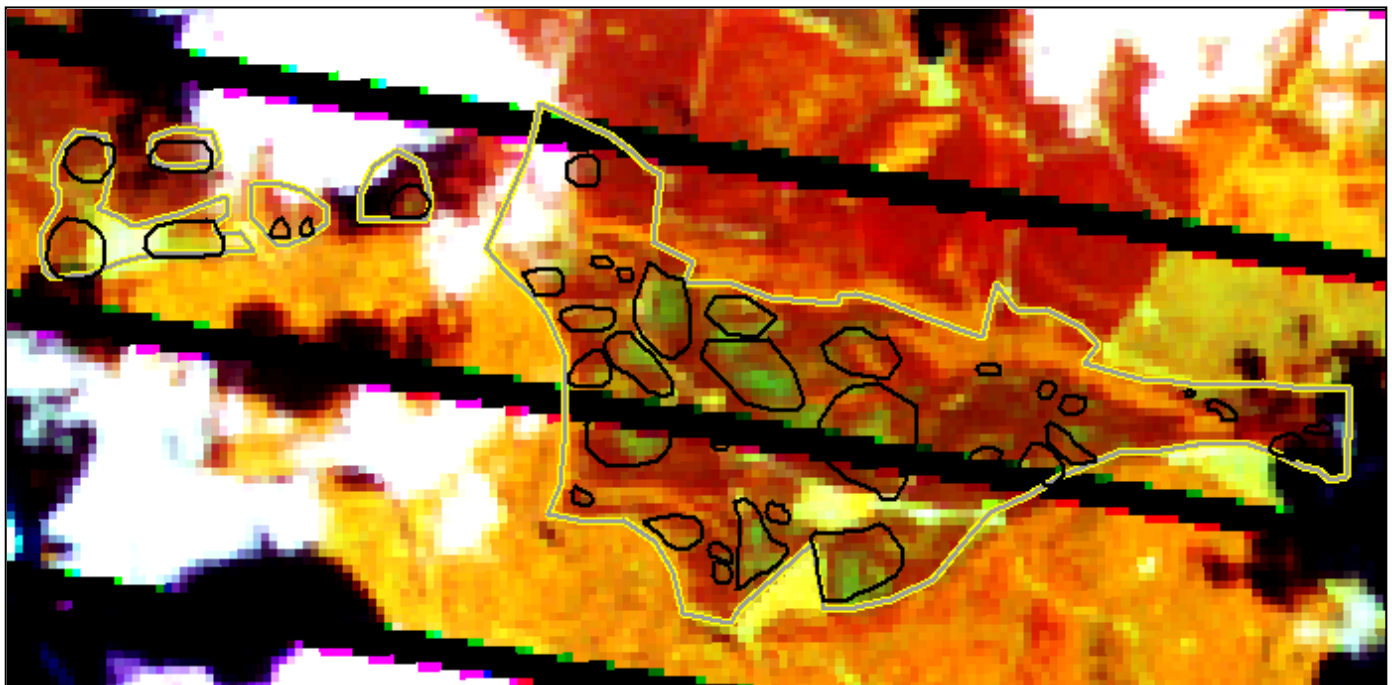
“Share this Map” URL from the Forest Change Assessment Viewer (FCAV), click to zoom to this area to display the latest forest change images in the (3) baselines:  
[http://forwarn.forestthreats.org/fcav/?theme=CONUS\\_Vegetation\\_Monitoring\\_Tools&layers=AAC,AA,AD,AG,&alphas=1,1,1,1,&accgp=G04&basemap=Imagery&extent=-9161907.716776801,3751978.7250608876,-9145913.268608151,3758781.620578259](http://forwarn.forestthreats.org/fcav/?theme=CONUS_Vegetation_Monitoring_Tools&layers=AAC,AA,AD,AG,&alphas=1,1,1,1,&accgp=G04&basemap=Imagery&extent=-9161907.716776801,3751978.7250608876,-9145913.268608151,3758781.620578259)

The three baseline products are displayed for the 08/19/2012  
 ForWarn percent NDVI change product  
 (yellow – to be clear cut, black – SPB stand damage)

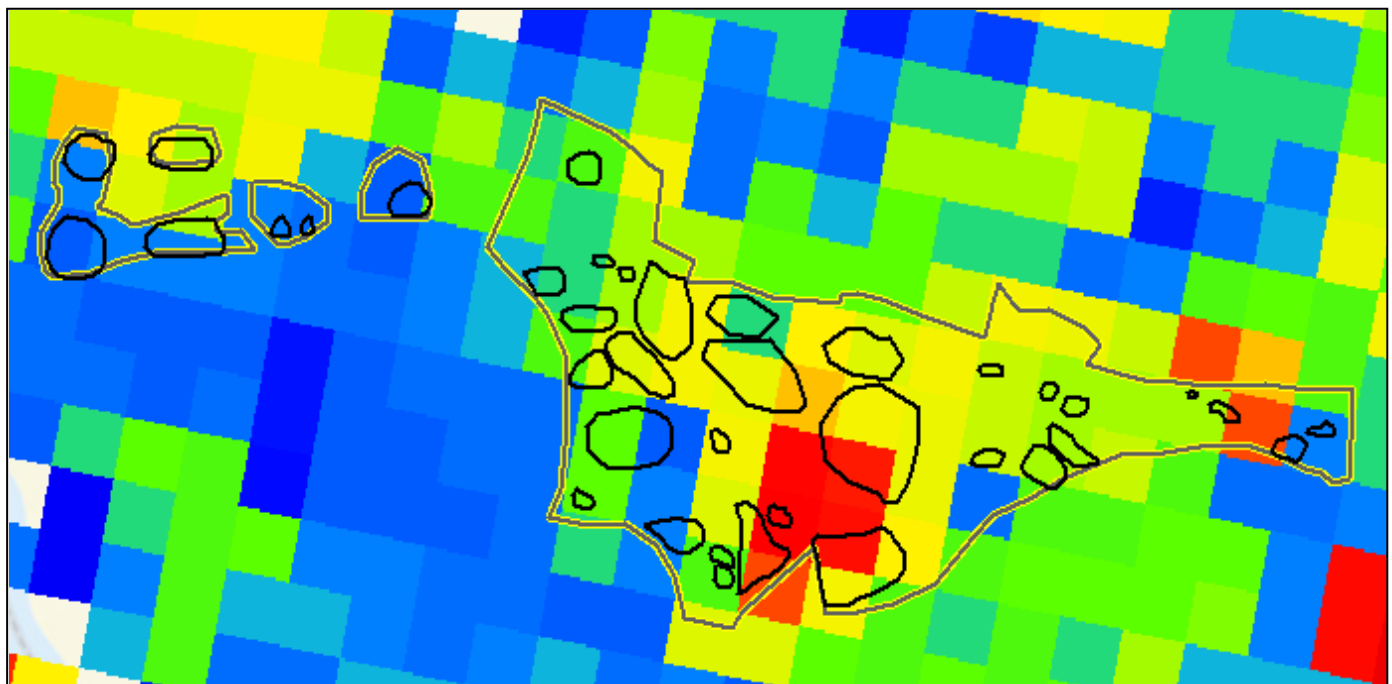


wchristie@fs.fed.us  
08/30/12

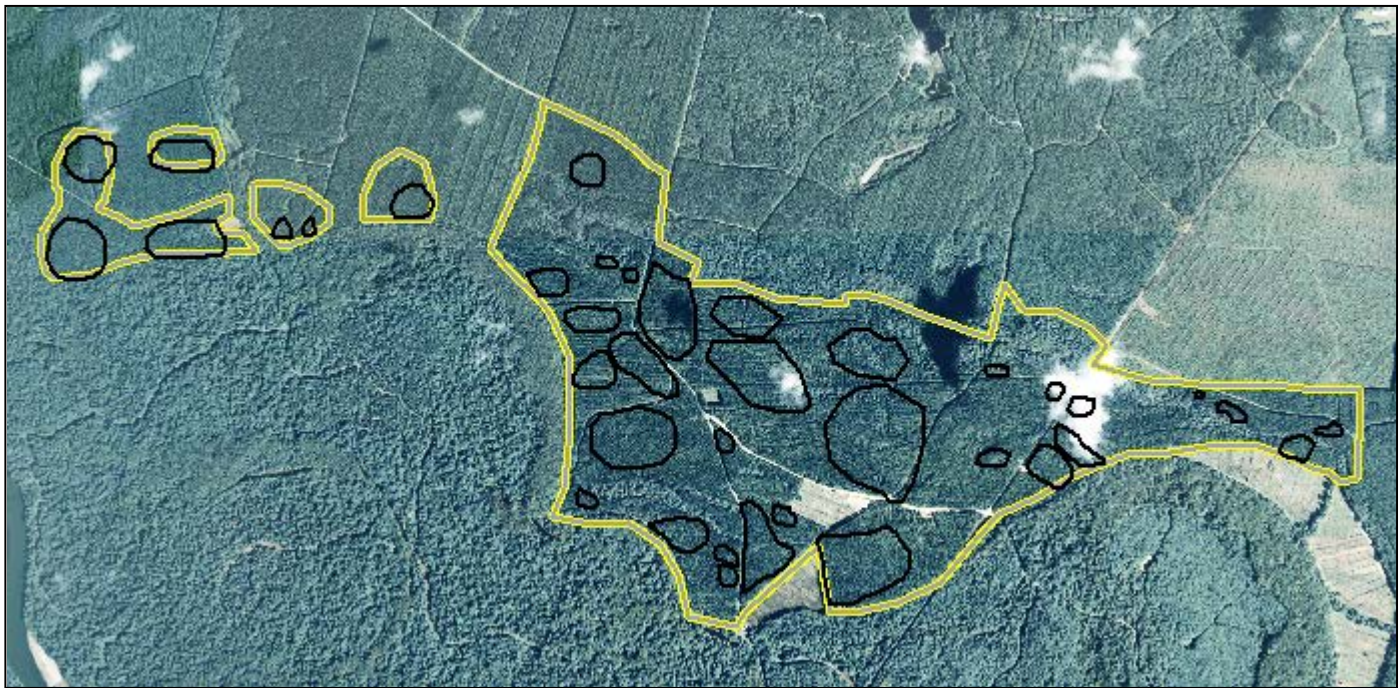
08/14/2012  
Landsat 453



08/19/2012  
*ForWarn* 11yr



2010  
GA NAIP



[forwarn@forestthreats.org](mailto:forwarn@forestthreats.org)



[wchristie@fs.fed.us](mailto:wchristie@fs.fed.us)

08/30/12