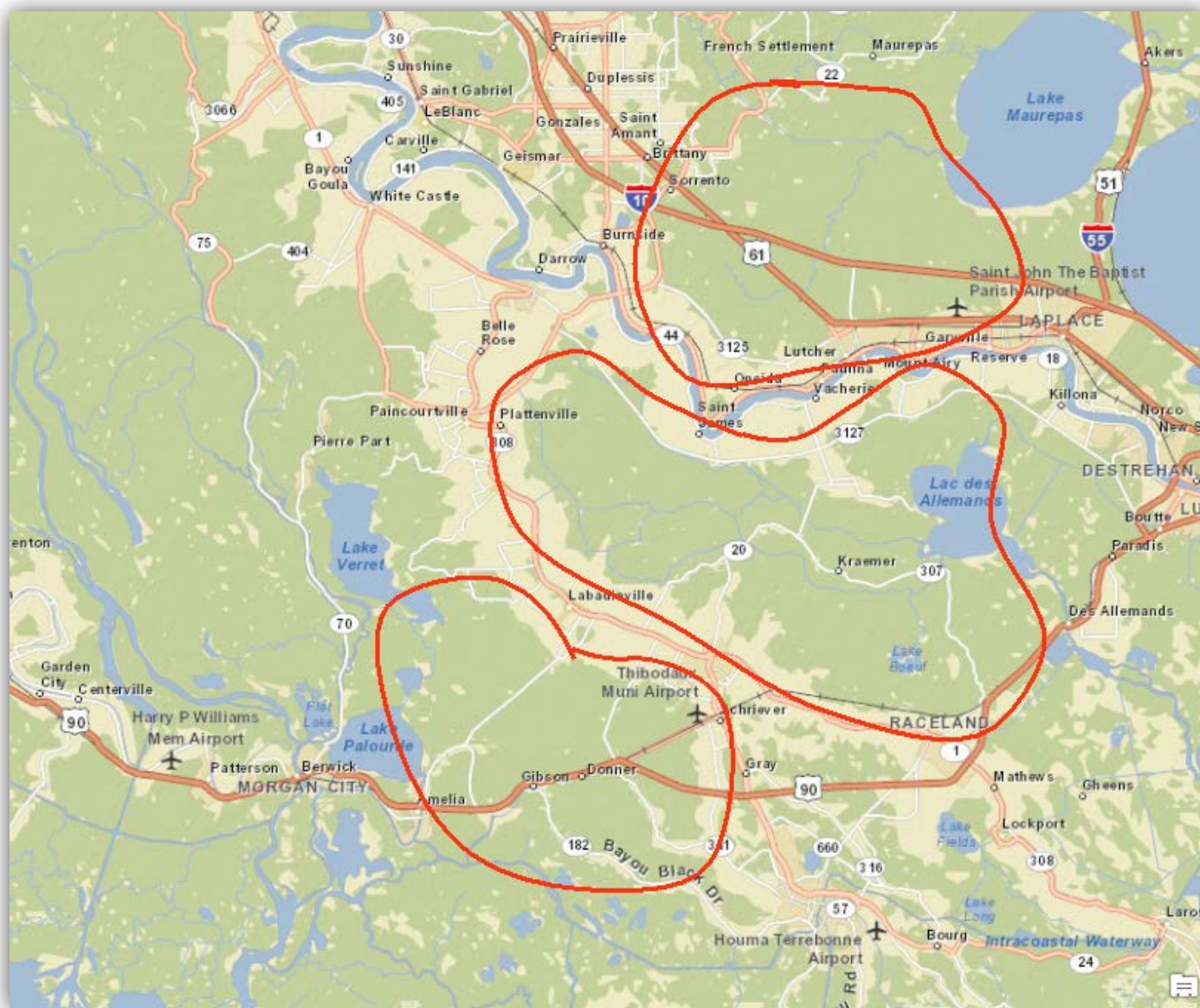
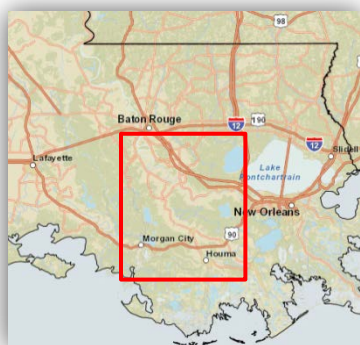


ForWarn Forest Disturbance Assessment

04/23/2013

Atchafalaya Basin and vicinity, LA



forwarn.forestthreats.org

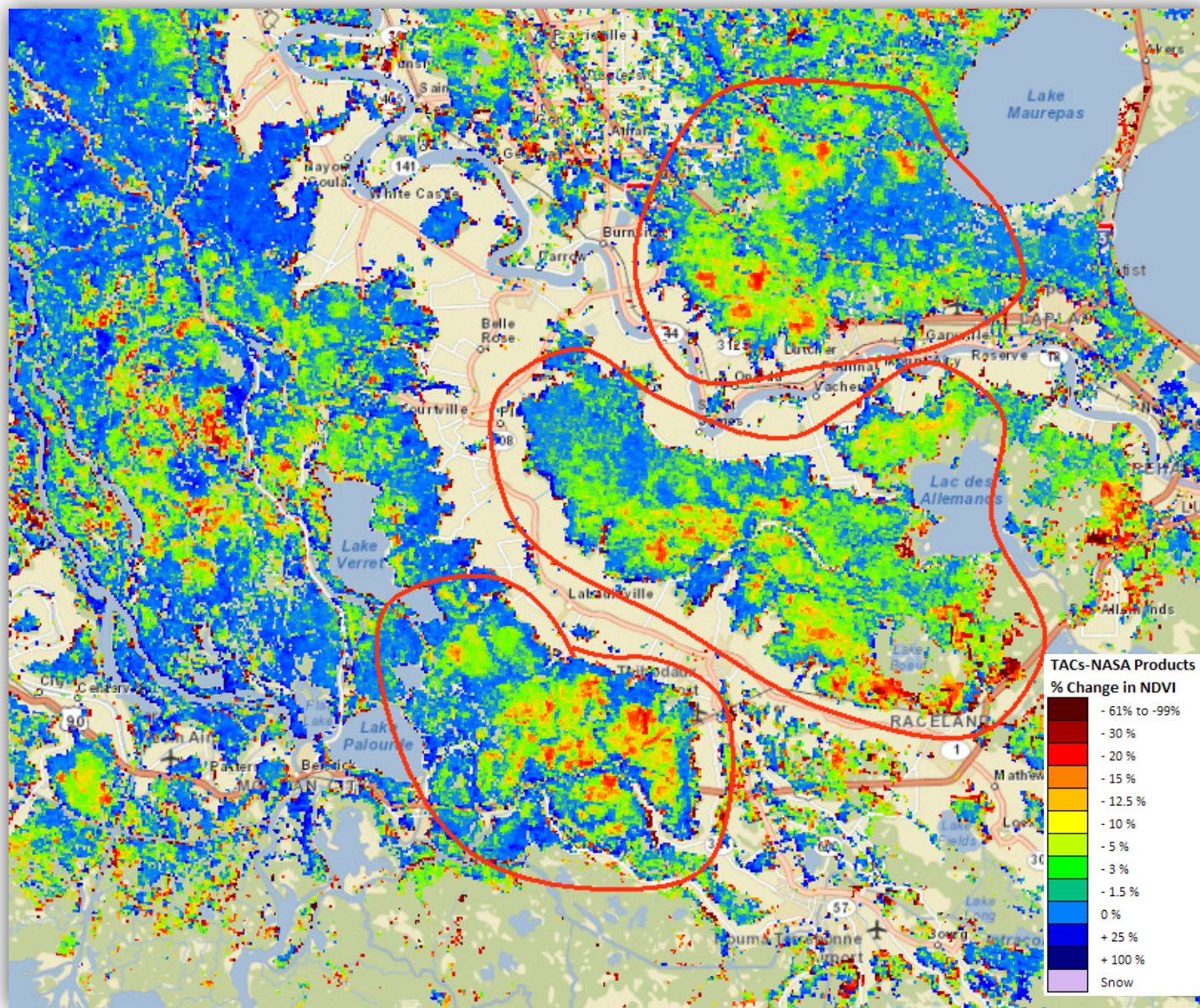
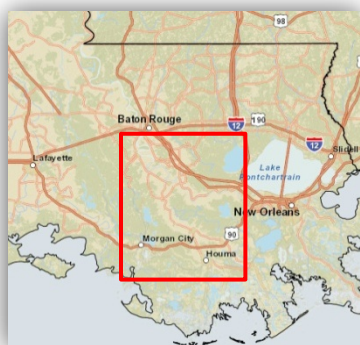


wchristie@fs.fed.us

ForWarn Forest Disturbance Assessment

04/23/2013

Atchafalaya Basin and vicinity, LA



forwarn.forestthreats.org



wchristie@fs.fed.us

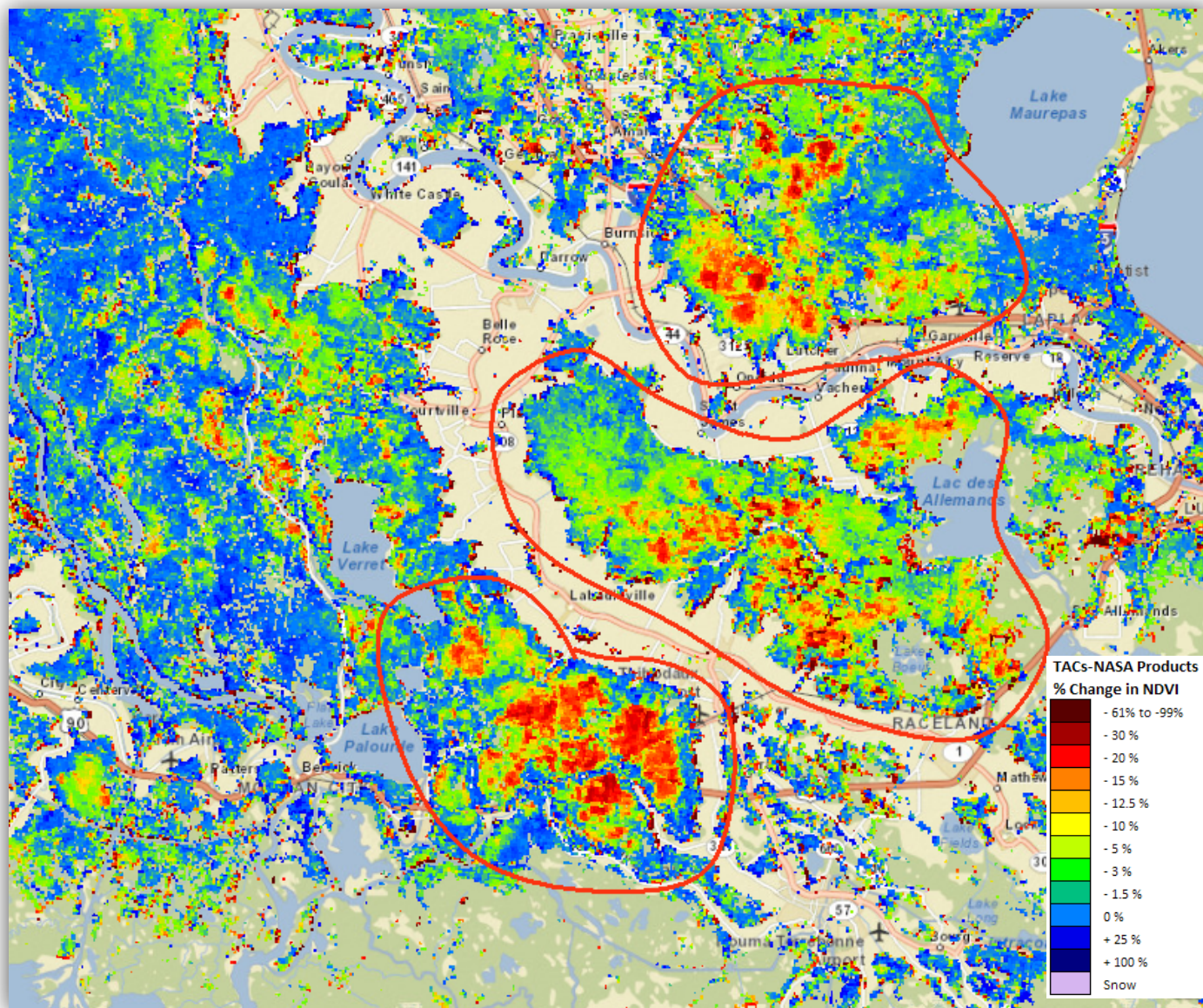
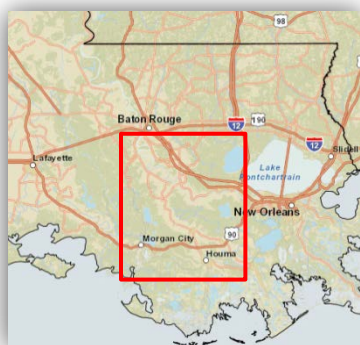
04/14/2013

Adaptive length 1yr compositing method

ForWarn Forest Disturbance Assessment

04/23/2013

Atchafalaya Basin and vicinity, LA



forwarn.forestthreats.org



wchristie@fs.fed.us

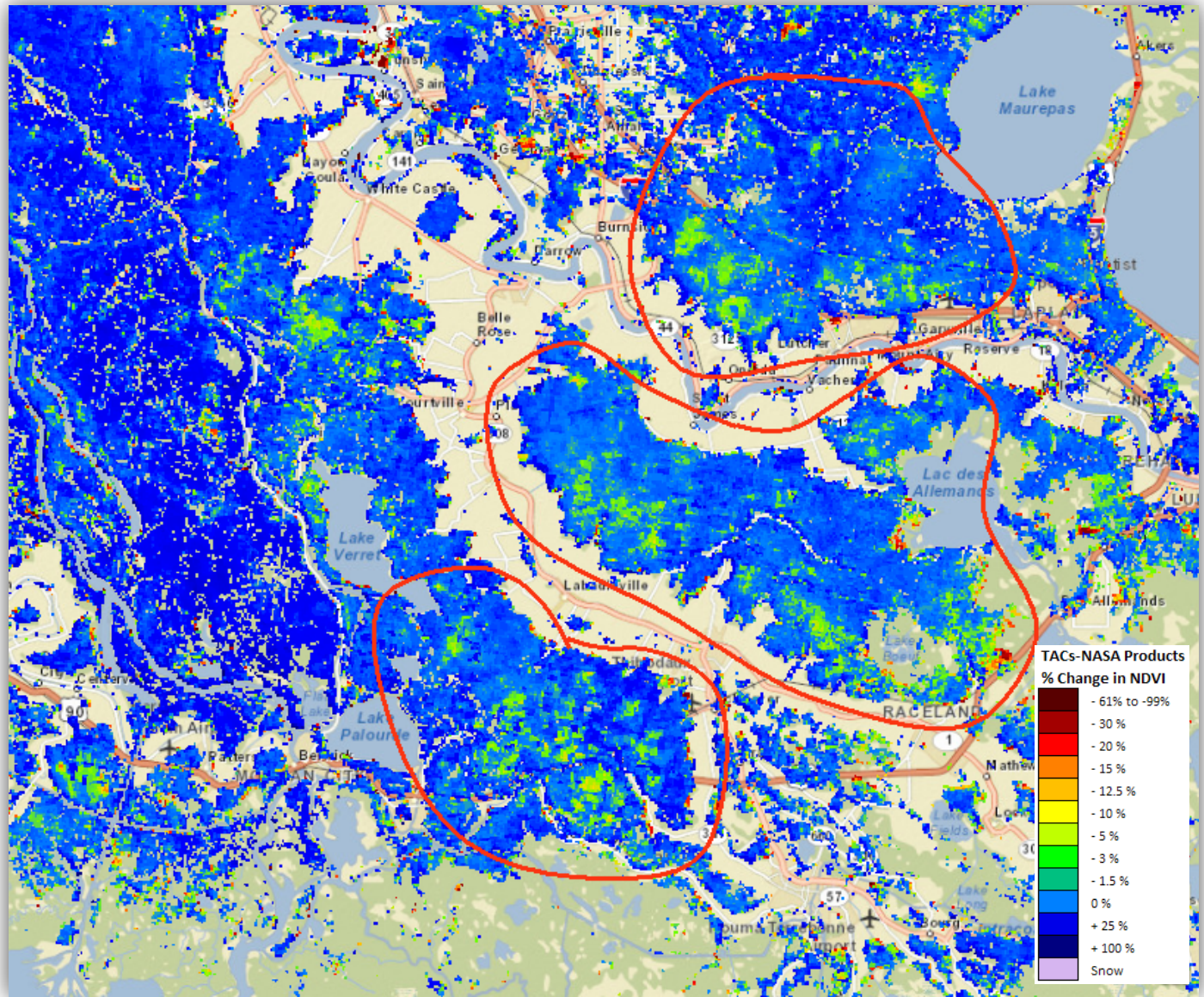
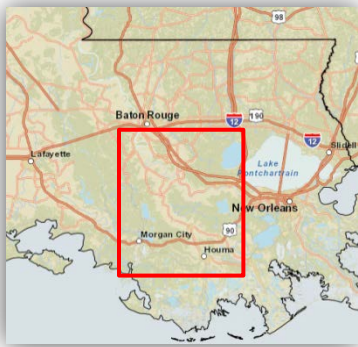
04/22/2013

Adaptive length 1yr compositing method

ForWarn
Forest Disturbance
Assessment

04/23/2013

**Atchafalaya Basin
and vicinity, LA**



forwarn.forestthreats.org



wchristie@fs.fed.us

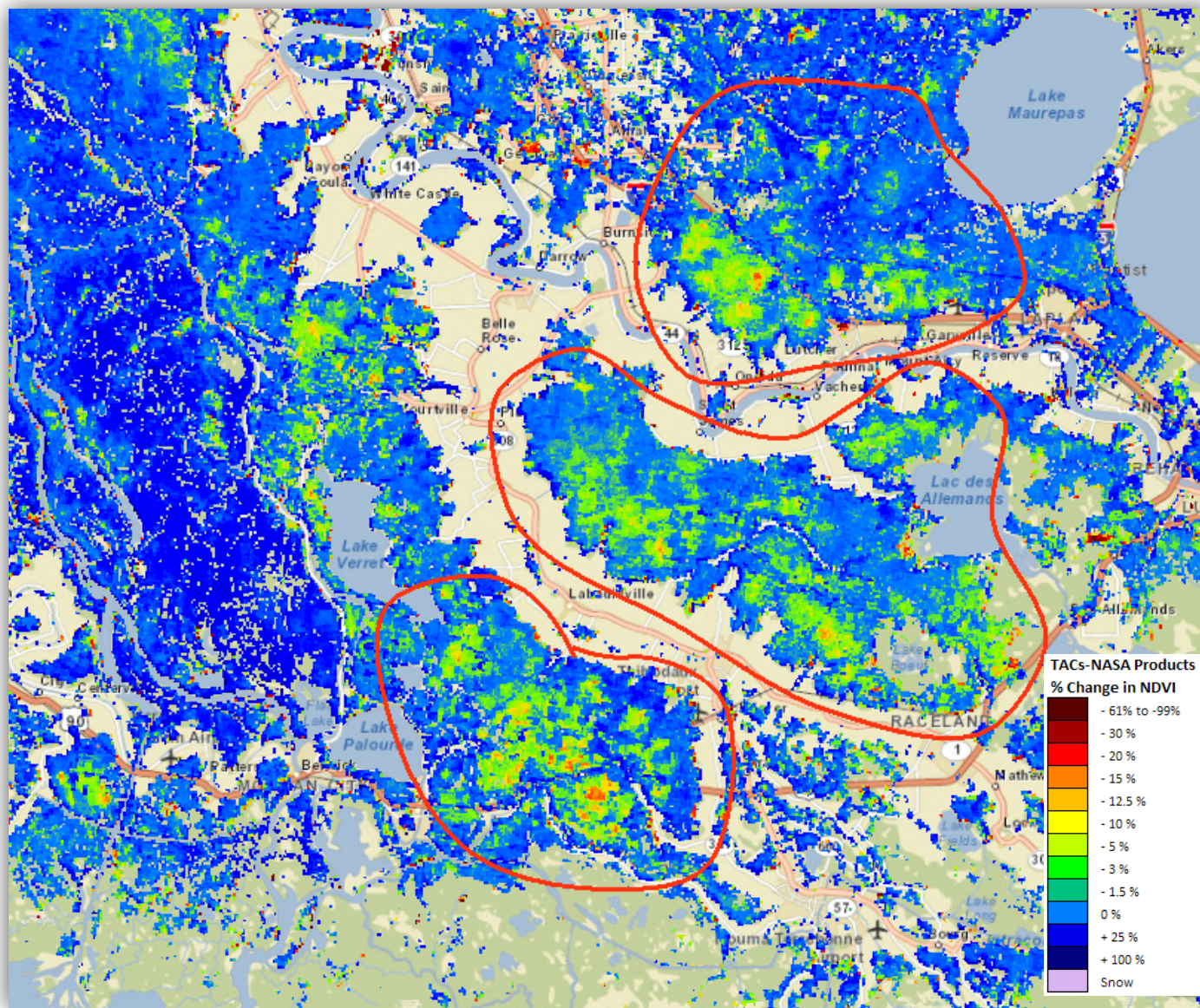
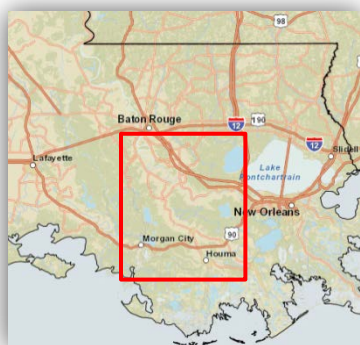
04/14/2013

Mean of the maximum NDVI all-year compositing method

ForWarn Forest Disturbance Assessment

04/23/2013

Atchafalaya Basin and vicinity, LA



forwarn.forestthreats.org



wchristie@fs.fed.us

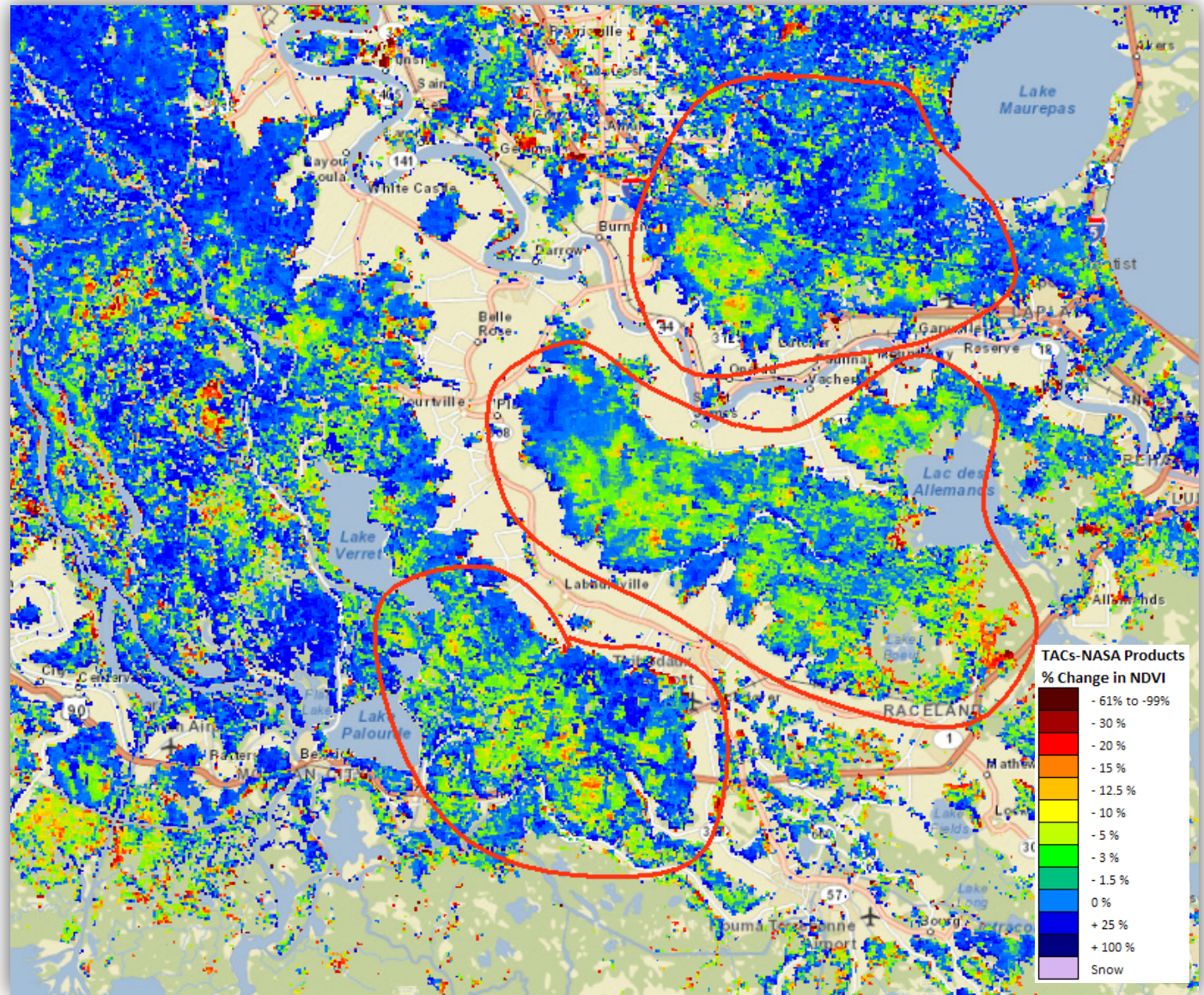
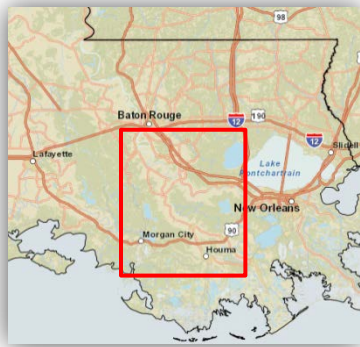
04/22/2013

Mean of the maximum NDVI all-year compositing method

ForWarn Forest Disturbance Assessment

04/23/2013

Atchafalaya Basin and vicinity, LA



forwarn.forestthreats.org



wchristie@fs.fed.us

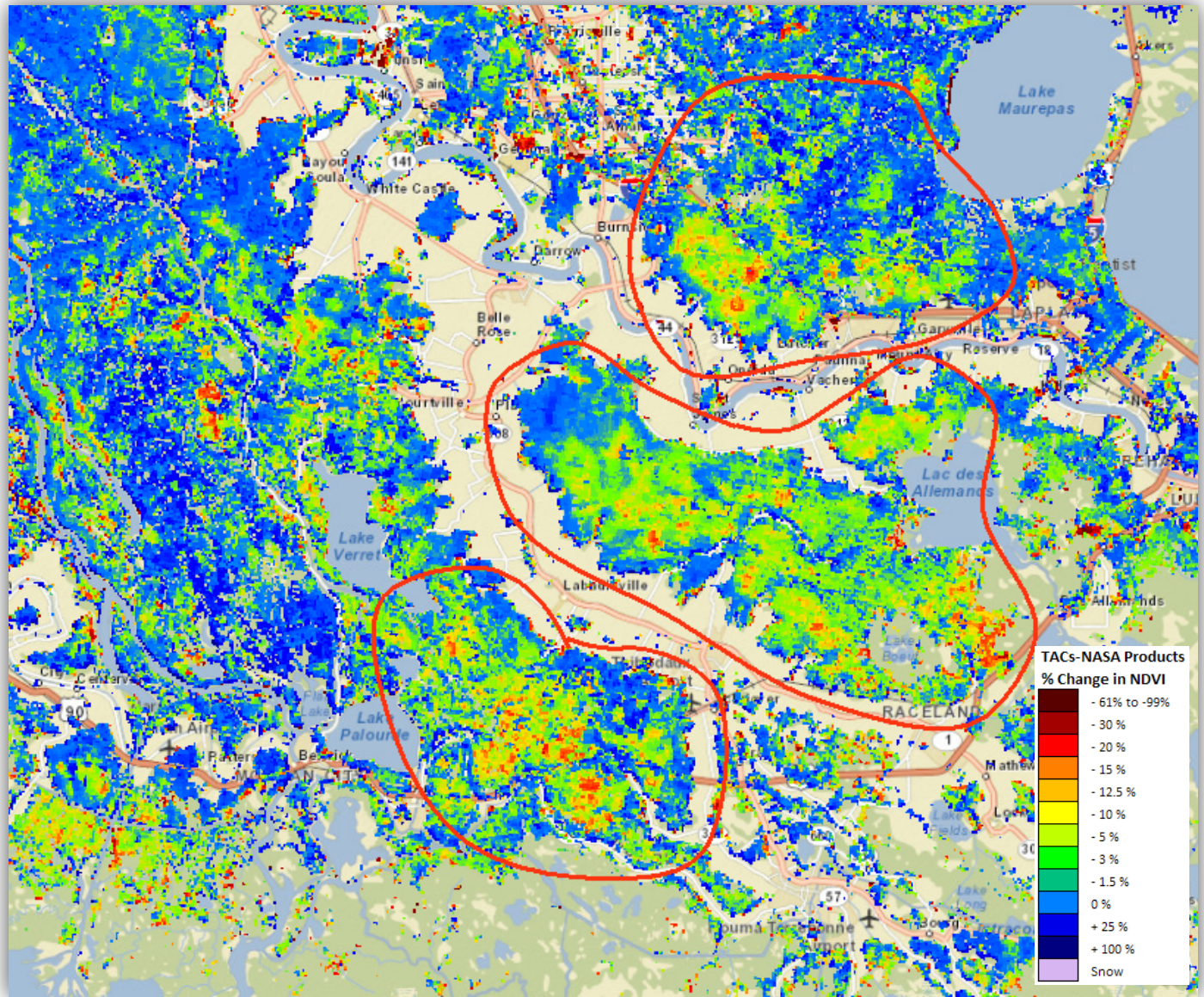
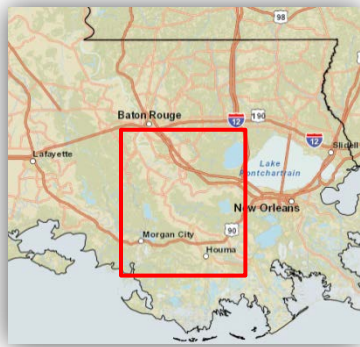
04/14/2013

Maximum area under-the-curve compositing method

ForWarn Forest Disturbance Assessment

04/23/2013

Atchafalaya Basin and vicinity, LA



forwarn.forestthreats.org



wchristie@fs.fed.us

04/22/2013

Maximum area under-the-curve compositing method